



MAY 2024

Anzac Day commemorations in Matakohe and Maungaturoto



Hazel Squires & Aspen Olsen-Davies in WW1 nurse uniforms



Craig Linton and his horse Dude stand to attention



Piper Andrew Berry and Chris McMurray



RSA member Keith Stutt lowering the flag



Trevor Brijevich and family

Anzac Day saw great turnouts at both Matakohe and Maungaturoto.

The day began with a dawn service in Maungaturoto while Matakohe started with a fall-in outside the hall at 10.30.

Mounted Trooper Craig Linton in WW1 Mounted Rifles uniform was present at both ceremonies on his trusty steed.

The guest speaker in Maungaturoto spoke of those who left us, and those who returned, who helped us have the lives we live today. We should honour them by living a full and wonderful life.

Paparoa Sports and Recreation Association
Community Dinner
Mid Winter Christmas

SATURDAY 22 June 2024

FROM 6.30pm BYO Drinks

At the Paparoa Sports Pavilion

For bookings contact Jane Bailey 4316 148
 or lillian.jane.bailey@gmail.com

ADULTS \$20.00
 CHILDREN \$10.00 (up to age 14)
 FAMILY \$50.00 (2 adults & 2 children)



Photo credits: Mel Badenhorst, Nicola Woollam, Vicky Hilton and Deborah Wilkinson.

INSIDE

- At the market 2
- Council Mark 3
- School news 4
- Letters From the Old PO 9
- Books & bookclubs 11
- From our family to yours 14
- April in the Garden 15
- What's On 18
- Community Directory 19
- Tides 19

Paparooa Press PP

PUBLISHED MONTHLY BY
Progressive Paparooa Inc. (PPI),
for Paparooa, Pahi, Matakoho,
Whakapirau and Tinopai.

CIRCULATION 1,050

CONTACT US:

- press@paparooa.org.nz
- PPI, PO Box 107, Paparooa 0543
- www.paparooa.org.nz

ADVERTISING

Rate Card available by email
Booking & Copy deadline:
15th of month
Publication date 1st Wed of month

At the market

Tina De Suza has been a regular stallholder at the Paparooa Farmers' Market for about six months now, selling hand made sterling silver jewellery and hand crafted silverware creations.

Tina and husband Greg spent most of their lives in Auckland and working as IT contractors. Tina always had a love of jewellery and after doing a couple of classes in silversmithing she realised she had found her passion.

They had previously stayed with Greg's brother and his family at their bach in Tinopai, and when Tina and Greg decided to get out of Auckland

in 2018, the search for a new home was on.

A lovely old bach came up for sale in Tinopai, with a small garage that Tina has taken over for a workshop. Greg now keeps himself busy as a skipper for North Kaipara Coastguard.

Using recycled solid sterling silver wire and sheet sourced here in NZ, Tina makes rings, neck chains, bracelets, pendants and brooches from scratch. Some of her favourite pieces are the gorgeous pendants and earrings cast in Auckland from seashells she has gathered (or been gifted) off our local beaches. Kina from Whangarei Heads, cockles and oysters from Tinopai and tiny paua from the South Island. A recent addition to the collection are the beautiful kauri leaf pendants and earrings, sourced locally from Matakoho trees.

Tina also enjoys repurposing original vintage cutlery that she transforms into earrings,

pendants, rings, bracelets and tiny bud vases. Most of her cutlery is imported from the USA as there is a huge selection of original vintage silver plated cutlery with beautiful designs available there.

Over the years Tina has sold her jewellery online at www.tinadesuza.com (check out her work here), and through a list of stockists from Russell in the North to Riverton in Southland. She really enjoys selling at the Paparooa Farmers' Market, and always has several 'market specials' on offer. This small local market with it's friendly vibe is a joy to her; seeing people catching up with other locals, meeting visitors who are passing through and enjoying some friendly banter with the other regular stall holders. Tina is always happy to chat to new customers (and old ones too) so do say hi to her when you call into the market every Saturday morning. Pete



Kaipara WellBeing Hub

MAY 11th 1.30-4.30pm

Paparooa Sports Pavilion - Paparooa



Guest Presenter: **Veda Austin** www.vedoaustin.com/
Better known internationally than in her native NZ, Veda is a water researcher, public speaker, mother, artist and author of "The Secret Intelligence of Water." She believes that water is fluid intelligence, and it is through her remarkable crystallographic photos that water reveals its awareness of not only Creation, but thought and intention through Imagery.

Suggested Contribution:
\$15-\$25

Enq: 0274 583 691
lynnmusic@gmail.com

Paparooa Motor Camp
CABINS | TENTS | CARAVANS | MOTORHOMES
17 Pahi Rd, RD1, Paparooa, Northland. Ph: 09 431 6515 Email: paparoomotorcamp@xtra.co.nz

Set in a quiet rural area, within easy walking distance to picturesque village with shopping facilities, a general store & post office, service station, restaurant, friendly country pub, takeaways, café, gallery, bush walks. Only 6kms to the Matakoho Museum.

www.paparoomotorcamp.co.nz



**Self Contained Cottages
Cabins with TV
Tent and Campervan sites**

**Contact
09 431 6515
Cnr SH12 and Pahi Rd**



A reminder to our contributors!

We need all advertising material by the 15th of the previous month and all editorial copy by the 20th. We cannot guarantee the publication of any material received after these dates.

While we always welcome editorial content we reserve the right to decline or hold over any articles outside our regular columns.

Opinions expressed in Paparooa Press are the author's own and not necessarily those of the editorial team or PPI.



Council Mark says – We have a lot to be grateful for.

There is a piece of detritus stuck in the recesses of my brain from the time back in the Dark Ages when I was a first-year student at Victoria: “If men define situations as real, they are real in their consequences”.

I had always attributed this to GH Mead, but according to Wikipedia it was Thomas and Thomas back in 1928. You might be forgiven for thinking that it was even earlier than 1928 - before the time women had been invented, but I digress. I guess GH Mead was my misplaced perception of reality, although it was real in its consequences.

A better illustration of the Thomas & Thomas theorem is in relation to climate change; you may accept it as reality or you may not, but if your insurance company believes that your property is at risk of harm as a result of extreme events arising from climate change your insurance premium is going to increase, or the insurance

company may even decline to insure you. That’s not going to help getting a mortgage either. You could try telling the insurance company or the bank it is wrong about climate change, but I suspect that wouldn’t cut a lot of ice.

Council news: I used to have a “Proudly Kaipara” tee shirt, but as a protest against a council decision I strongly disagreed with, I ripped it apart and presented it to the mayor as the spoils of victory. I have a couple of Mickey Mouse tee shirts on order to replace it with. I’m going to wear them to council meetings for the rest of the year.

ANZAC Day will have passed by the time you get to read this. I hope you took the time to think about what we have to be grateful for as a result of the sacrifice and endeavour

of those who came before us, tinged with sadness about the loss and waste of war. We have a lot to be grateful for.

Mark Vincent
Otamatea Ward councillor
021 0829 8037

Disclaimer: the opinions expressed here are my personal views and not official council policy

Ruawai to Maungaturoto
over 20yr experience with cuts and colour
Your at home hairdresser
Tina txt/call
0210633674

Maungaturoto Primary School 150th Jubilee

Saturday, 19th October 2024 is the 150th Jubilee of Maungaturoto and Districts Primary School.



The Jubilee will run in conjunction with our annual Pet and Flower Show Day. Past and present staff and students are invited to join us, reminisce, and catch up with old friends whilst enjoying this school event.

A powhiri will be held at 10am followed by a performance by our Kapa Haka Roopu, cake cutting, and speeches. Guests will

then be invited to tour the classrooms, have decade photos, and pick up registration packs.

A dinner will be held on Saturday evening at the Maungaturoto Country Club with the bar opening at 5pm.

The committee would appreciate registrations ASAP to help them with their planning.

How do I register?

- School website
- Scan QR code
- Find them on Facebook
- Hard copies available from the school office
- Email: jubilee@maungaturoto.school.nz



Need any help with your computer issues then call. I can help with computers, Laptops, Printers, scanners etc...

Julian Brown
Comp TIA A+
Certified Computer Technician

Mobile Number: 027 2773943
Email: julian@dezinacomp.co.nz

Level 1
1980 Paparoa Valley Road
Paparoa
Northland

Need a Shed?

- Timber and steel buildings any size
- We do plans and engineers designs for council
- Farm sheds
- Commercial buildings
- Feed pad shelters
- Goat/Chicken sheds
- Horse stables
- Lifestyle sheds
- Excavation, driveways and concrete floors

Your local builder: Andre Nicolai 021 202 9854

Starbright Wellness

Reflexology

Massage or Reiki

Weight Loss Coach

Marriage celebrant

Vicky Hilton

021 2484259

2004 Paparooa Valley Rd,

Vale - Margaret Anne Sterling (nee Marsters)

Born 18th Aug 1933, passed 17th Mar 2024, at the age of 90.

From the age of two Margaret grew up in Taipuha on a ballot farm with her family. She loved rural life, family and learning new things.

In 1955 she married Bob Sterling, moving to Sterling Bush Road and raised a family of five. She lived in this house for 68 years.

Margaret was keen on heritage and gathered much information about the family history. She kept herself busy cooking, scrapbooking, sewing, gardening, reading,

painting local scenery, and helped start the first Library in Paparooa.

Margaret's Memorial Service was held at the Machinery Club in Dargaville, where friends and family gathered to share stories about her 90 years.

It was a privilege to have shared time with her as her mobility declined because she would always share an interesting story of her life or the district.

Margaret passed after a short stay in care but lived her life full and well until the end.

Vicky

**THE KAURI MUSEUM****Guardians of the kauri story
Past, present, future****Museum open 7 days 9am-5pm**

We are very excited to have opened a spectacular new attraction at the Museum - the Forest Walkway.

Come and see it for yourself!

Gumdiggers cafe: open 10am-3pm5 Church Road, Matakoho ph 09 4317 417 www.kaurimuseum.com**Thinking of Selling?**

Allow me to walk with you on your real estate journey. Together we can make your property dreams come true.

021 103 6277nicky@connections.nz
www.connections.nz**Your Kaipara
Property Expert****NICKY REID
REAL ESTATE**
Connections Real Estate Ltd
MREINZ, Licensed under the REA 2008**Paparooa volunteer firefighters**

A busy fire season has just drawn to a close, touch wood.

As one of the Kaipara Permit assessors, I have signed off 120 permits this season, quite a lot by historical standards.

None of the permitted fires have escaped, thankfully for my reputation.

One local character had one get away but managed to stop it before he had to call 111- just as well!

There were still quite a few call outs to unpermitted fires that got away.

Please everyone go onto **www.checkitsalright.****nz** and apply for a permit if we are in a restricted season. Its quick, easy, free and we will help you to burn safely.

If your neighbour is burning illegally but it's probably safe, please check if they have a permit before you straight away call 111. If they aren't willing to comply, by all means dial it in and one of us will growl them.

By and large you have all



been fantastic, so I thank you.

Paparooa is the largest contributing brigade to the TK professional fire fighting taskforce, who have been busy with TK fires at Scottys Camp Road and at Kaikohe recently.

We have also had a steady trickle of calls to road crashes plus afore mentioned fires.

Ken Ogilvy, Fire Chief

WORKING SMOKE ALARMS SAVE LIVESPlease call to make a time for us to carry out a **FREE** Home Fire Safety Visit. We will look at your current positioning of fire alarms and add to them if they are needed.**0800 693 473**

Paparoa School 14th Annual Possum Purge 2024 Sponsorship

The event this year will be held from Friday 6th September through to the Community Gala Day at Paparoa Showgrounds on Sunday 08th September.

We are so excited to be able to hold this fundraising event again. Not only does it raise money for our enviro-conscious rural school but it also brings our community together - as well as keeping the possum population under control. This year our fundraising focus is on raising funds to complete a kitchen for students to cook in, using food harvested from their garden.

The Possum Purge plays an important role in our rural area in controlling pest possums and the possum fur is plucked and sold,



which supports New Zealand industry. In 2023 we purged 900 Possums and we have culled a whopping 11,933 since our Purge began in 2009. In addition to this the Possum Purge Gala Day is filled with fun activities and prizes and we have teams and families come together from all over Northland and Auckland each year making this a major event on the calendar.

There are heaps of possums out there eating their way through our beautiful Kaipara Forests. It will be another bumper year for our hunting teams. Everyone is keen to get going.

We would love to have you sponsor our event this year. We would advertise your business in our event promotions, online as well as publicly at the Gala Day. Sponsorship could be products from your

business, a donation or vouchers; whatever level of sponsorship suits you best.

Our enviro conscious rural school would very much appreciate your support. Please contact me on the details below, we look forward to hearing from you.

Karyn Taylor Principal
admin@paparoa.school.nz

DIGGER FOR HIRE

2.5 Ton

ON TRAILER AND INCLUDES:
TILT BUCKET, DIGGING BUCKET AND
SPADE BUCKET

HOURLY RATE \$40

Pick up in Paparoa or we can deliver for
small charge

Ph 021677265



COLOUR & CUTZ

Ladies & mens cuts
Colours & highlights
Weddings
Gift vouchers

All colours & products used at the salon are organic

Salon 09 431 7255 Gaylene 021 115 8506

OPEN TUESDAY - SATURDAY
1994 PAPAROA VALLEY ROAD



OCS May News

Community Lunch: We are very happy with our first Community Lunch in the new format and venue. The Good News Church

hall was bursting at the seams with approximately 80 people from pre-schoolers to seniors and everyone in between. By all reports everyone enjoyed the delicious spread which was prepared by our own Damian. We hope to see just as many at the next one which is on 12th June. Remember this is open to all ages, so come along, enjoy a lovely lunch, a chance to win the raffle and catch up with friends and neighbours.

Meetings space available: The Community House has a nice new space which is almost ready for local groups and clubs to use for meetings, AGMs, etc. Just call us on 431 9080 to find out what we have and the details about making use of it.

Free shopping trip: Tuesday 14th May (second Tues)
Wednesday 22nd May (fourth Wed)

The van leaves the parking area at the Maungaturoto Retirement Village by the rental units at 9am, travels to Whangarei and returns in the afternoon. This is a great opportunity to get some groceries, or just to treat yourself to a nice lunch out - and I know someone who would love to go for the ride and see the shops, but I'm always at work on those days.

For information on any of the above please phone us on 09 431 9080.

Take care
From all at OCS

Protect

your families tomorrow.



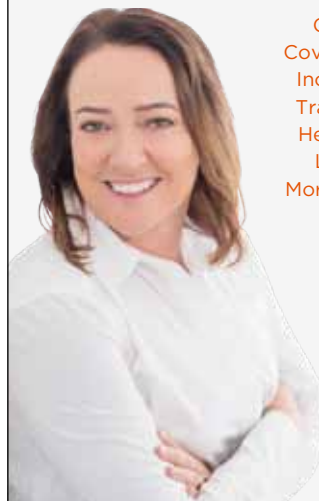
Donna - 027 5857776



info@urcovered.co.nz

WE SPECIALISE IN...

ACC
Cover Plus
Cover Plus Extra
Income Cover
Trauma Cover
Health Cover
Life Cover
Mortgage Cover



URCOVERED
Discussed, Personalised, Managed, insurance.



White Rock Gallery

Kaipara art & craft

OPEN 7 DAYS 10am-4pm
5 Church Road, Matakohe
next to the Kauri Museum

There's something for everyone

Kaipara Marchers - fun, fitness, friendship

We are excited to report that we have recently returned from Invercargill where our team of senior ladies represented Kaipara at a National Leisure Marching event. It was our fundraising and local community support that made this possible.

A beautiful, colourful, array of over 700 women in wonderful uniforms displayed their marching skills. Amazing!

Leisure marching has become a fabulous way for women to be able to keep fit, and keep the mind active, as well as sharpening up their co-ordination and

concentration skills. You can do it!

You may have seen some recent Facebook videos, and general information. For more, look up Leisure Marching NZ.

Leisure marching is non-competitive so there are no restrictions. Some ladies have been able to join up with teams - even with various disabilities. The camaraderie is fantastic and non-judgemental!

If you would like to come along to one of our practice evenings and get an overview of how we operate, and see some routines, then please do. These are held weekly on a Wednesday evening at the Maungaturoto Hall from 4.30pm-6pm.

Our team members are self supporting by means of a small monthly fee. We supply a lovely uniform, boots, and hat etc- thanks again to local charities.

We are called upon for parades, local events and the like. We also attend open display days held by other teams from within the North Island. This usually involves a day or two away, but they



are great fun and you meet many others of the same ilk. You will also see just how clever we are!

Leisure Marching attracts hundreds of ladies nationwide aged 50-80+ years old. So why not give it a try, you won't regret it!

Thank you so much Paparoa and Kaipara Communities, for your on-going support of our team representing Kaipara.

For more information contact:

Lyn Hutchings 022-0708674

Barbara Lee 027-2854317

Jane Baird 027-2714380

Kaipara Marchers

Books @ Ruawai

5 Freyberg Rd, Ruawai

Selling secondhand books & music

Loads of good reads
Lots of children's books
Fill a bag of books for \$5



Open: Monday, Wednesday, Friday 9:30-2:30pm
Saturday 10am-1pm

Ph 09 439 2044
027 200 5653 or 022 073 9752



NATURAL PERFUMERY WORKSHOP

DISCOVER WHAT YOUR NOSE KNOWS

GET IN QUICK! - ONLY 4 PER WORKSHOP



ONLY
\$65
PER
WORKSHOP

A fun and easy learning experience with a hands on guide to help. No toxic or nasty ingredients used. No fragrance oils. Only the purest organic essential oils and ambergris tincture.

You choose the oils, create the scent, bottle it and give it a name. Then take it home, wear it, love it! Everything provided. Just bring yourself.

WHEN: May 13th and May 20th 2024. TIMES: 9.15-11.30am or 6.15-8.30pm

WHERE: Quince Cottage, 1 Franklin Rd, Paparoa next to General store.
Parking available. Email: virginia@theolfactorynz.com or Ph: 021 2277564 to book your date & time.



The gallery has met with great success at Matakohe, both with sales and with visitor numbers. We have a lovely gallery space in the Kauri Museum's Post & Telegraph Office, great work on display from our members, and the community supports us by 'buying local'.

THE ONLY THING WE NEED NOW... IS YOU!

Are you an artist or artisan who would like to exhibit and sell your work? Cost and time commitment is not too great.

Or perhaps you're someone with a little time on your hands who'd like to be involved? As little as 3hrs per month would be a huge help.

We need YOU to help us to staff the gallery. Full training is provided and help with petrol costs.

Please get in touch with Stu, ph or txt 021 975 314 or email whiterockgallerynz@gmail.com.

White Rock Gallery Committee

Paparoa School news

Term one has finished with a strange ending due to the long Easter weekend being during the term rather than tagged on to the beginning of the holidays. Since the last Paparoa Press our students travelled to Ruawai Primary to participate in their annual triathlon.

The students had a great time, some showing grit and determination as some students had to complete two disciplines. On the same day, I had a very early start with four Year five & six students as we headed up to Kerikeri Primary School to compete in the annual Northland Literacy Quiz. This competition consisted of 10 categories with 10 questions in each. The categories all related to books and authors. There were 36 teams altogether working in teams of four for over three hours. This was the first time Paparoa School had entered a team and they did themselves proud, achieving 6th out of 12 Year five and six teams.

Our school is slowly growing with many new students and their whanau joining us in Term one. The girls are still outnumbering the boys which they are thrilled about!

Our kitchen continues to take shape. As I write this, the gib is going up on the walls with the plasterer and painter waiting in the wings. Thank you to all the community who supported our Easter raffle, helping us fundraise shy of \$500 that will go towards the kitchen costs.

The school has 'old man pine' cut up and ready to be picked up if you would like firewood. \$80.00 per m3 and we have mulch for \$50.00 per m3. The mulch will be great to add to upgrade the gardens or

tidy them up. Please contact Jane in the office if you are interested 09 431 7379. All proceeds will go towards our kitchen build.

Moving into Term two, the Year five & six students are heading to Waihi for camp. The gardens have been mulched over with the support of Sharon (one of our nanas) ready for the

students to put in a winter crop. We have the Paparoa Lions speech contest coming up as well as a huge school event in June. Watch this space!

The end is nigh and the days are ticking down until the Brynderwyns are open again. A big shout out to our bus drivers who have had to deal with the large volume of

trucks as they travel the roads twice a day, keeping our tamariki safe during pick ups and drop offs. Thank you for looking after our kids!

Until next month, be kind and stay safe.

Karyn Taylor
Principal
Paparoa School



OTAMATEA REPERTORY THEATRE

PRESENTS

The 2024 One-Act Play Festival

Come along to the Otamatea Repertory Theatre in Maungaturoto for a theatrical weekend of one-act plays.

*Prizes given for best acting, best original script, best direction, best production values (set, costumes etc) and People's Choice Best Play.

Friday 17 May 7pm
Saturday 18 May 2pm & 7pm

info@ort.org.nz

\$20 Adult
\$10 Student

Door sales only, EFTPOS available.


**BE
SEEN...
LIGHTS
ON** 
**In fog
or rain**

do you need a
WEBSITE ?

Local, friendly
website design
& management.
sme-sitedesign.co.nz

Contact Paul for more information:
E: paul@sme-sitedesign.co.nz
T: 09 431-7063
M: 022 625-4156

**Get More Customers
Cost Effective Marketing**



**RIVERSIDE
GLASS & GLAZING**

**Kyle
021 1376353**

Glass and glazing needs,
cat doors to caravan
windows. Great rates,
mobile eftpos.

Good Friday walk

0-100 in 30 minutes. This wouldn't be very impressive for a V8, but as the age-range of a group of Christian walkers it certainly is!

The annual Good Friday walk behind the cross this year included a baby less than one year old and a great-grandmother over 100 years old.

Joining them were 115 others from local churches who wanted to share with the community what happened 2000 years ago. They had banners that spelt out:

† JESUS †

forwards and backwards, - provided the carriers kept their positions!! From the first ones leaving outside Hubands to the last ones arriving at the village green took a full 30 minutes. On the way, the passing vehicles waved back and some



tooted their thanks. One highlight was the milk tanker driver who waved and tooted enthusiastically. If you're reading this bro, we'd love to meet up again. 😊

The walkers were of all ages, from many races and several of them were born outside New Zealand, but all are now locals, happy now to call the Kaipara their home. They are united in their love of Jesus and their determination to make a positive impact on their local community. The walk ended as they were marshalled safely across SH12, enjoyed hot drinks and hot cross buns on the green, and shared them with anyone who joined them.

John Aplin



Paparooa Store

Proudly Supporting Paparooa

OPEN 7 DAYS

Monday-Sunday 7am-7pm,



We stock a great selection of
CONFECTIONERY, ORGANIC, DELI, MEAT,
FRUIT, VEGES, FROZEN GOODS, BEER, WINE
and a wide range of grocery items at excellent prices

EFTPOS NZ HERALD POST CENTRE

Phone / Fax 431-7320

Cnr. Franklin Road and State Highway 12



PAPAROOA PRESS NEEDS YOU!

Things happen in our little village (and surrounds) but we often don't hear about them until months later...

If you have a story, event, obituary, or news item you think the community should, or would like to hear about - then please, please, send it to us.

We know that there are members of our community doing great things and they should be celebrated.

We can't be everywhere and know that there are many goings-on that simply pass us by so please, please keep us informed.

If you would like to make a regular contribution we'd also love to hear from you.

Email press@paparooa.org.nz by the 20th of the month.

Letters from The Old Post Office...

Something is rotten in the state of Denmark (and not only Denmark)



O what a whingy whiny pestilent pustule that knave be....

Dear Reader, as I lie in the deep, dark watches of the night listening to the rattle and rumble, not to mention shaking, of the vehicles of not quite "H" my thoughts turn to another H. Hamlet. As they do.

Perhap, not quite as irritating but then if you haven't been required to teach it to other angst-ridden teenagers then you know nothing of the pain. And I am referring to the teachers' pain, not the students, for whom I no longer need to give a rat's posterior. (Or paw if you shop at Woolworths).

Well do I recall the drawn-out internal dialogues (as we know they HAVE to be spoken so we, the poor recipients, may share in Hamlet's

anguish. Again and again and again). And, of course how many have to die before he can make up his mind? Let us count the ways. Straight out murder, manipulated blaming until Ophelia cannot take it anymore, (although she makes a beautiful corpse as we can see in Millais's painting) setting up two blokes to take the deadly fall, poison, direct murder and a dual fatal duel. What fun.

Dear Reader, the moral being of course, just do it or

not, but for goodness sake get on with it.

I have tried to take this idea of procrastination into account in my own life. Although, I do seem to have quite a few areas in which constant procrastination is the norm. However, I do draw the line at poncing around in tights and proclaiming "To do or not to do that is the question.... whether it is nobler to clean up now or to suffer the slings and slurs of outraged friends or offspring..."

The pile of vacuuming accoutrements in the corner is now referred to as a still life installation. (As is the dust, although there is not too much stillness about that.) I have titled it "All nature abhors a vacuum".

Dear Reader, I must return to my soliloquising. Luckily for you, it will remain only an internal monologue. Unless you make me quite cross.

Deb



PETFOOD STORE NOW OPEN!

SHOP HOURS ON WEBSITE



RAW FOOD
DOG ROLLS
KIBBLES
CHUNKS & BONES
TREATS & CHEWS
BIRD SEED

Click & collect now available!
Order online then pick up in store.

157 HURNDALL ST, MAUNGATUROTO

www.bobandben.co.nz | 027 292 4891 | steve@bobandben.co.nz

Birt & Currie Surveyors Ltd



Local Phone
09 280-9591

**Timely,
friendly &
personal
service**

info@landsurveyors.co.nz
www.landsurveyors.co.nz
PO Box 120 Paparooa 0543

Progressive Paparooa lobbying pays off

NZTA speed limits are changing for the better in Paparooa Village.

Traffic speed through Paparooa has been an ongoing concern for many years. Although the submission by PP took place some time ago the wheels of change have taken time to be approved.

NZTA have now announced new lower speed limits for some parts of Paparooa Valley Rd and extended the length of the restricted areas.

They are-

- 105m SW of Pahi Rd to 290m SW of Franklin Rd - lowered to 60kmh

- 290m SW of Franklin Rd to 130m SW of Skelton Cres - lowered to 50kmh. (This is quite a long extension of the 50kmh area to the west of Paparooa but reduces the 50kmh area on the eastern side)

- 130m SW of Skelton Cres to 95m SE of Nurse Cavill Lane - lowered to 60kmh.

The exact location of these points will be revealed when the signs go up, but it seems the submissions Progressive Paparooa made have been largely listened to. Unfortunately, the idea of a pedestrian crossing did not meet the cut nor did a request for lower speed on Paparooa Oakleigh Rd from

Station Rd to SH 12. But these changes should make Paparooa a safer place.

While speed is a matter for individual drivers to take on board, having lower posted limits is a start in the right direction. The speed limits can then be enforced.

These limits will come into force at a date to be announced as the changes are being phased in progressively throughout Northland. It would pay to keep an eye out for the new signs.

Progressive Paparooa is pleased that the voice of the people has been heard.



FARMWORK SERVICES

For all types of fencing, stockyards, handyman work, tree felling, tractor work etc.



phone

**Mike 09 431 6509
027 203 2694**

email

farmwork.services@gmail.com

**12 tonne digger now available
for driveways, farm tracks, hole boring etc**

Grow your own edible paradise

A newcomer to the Waipu district is Judy Keats, a garden design specialist with a wealth of experience creating productive edible gardens.

Judy's speciality is food forest design and implementation, fruit tree care & maintenance, farm planning and compost systems.

Originally from Tasmania, Judy has spent the past 20 years in Auckland. Her

work over the past 12 years has moved her away from her original career in fashion and into food growing. Judy has led many community garden projects and now focusses her attention on supporting individuals to utilise their lifestyle blocks for regenerative food production. Judy is well known at Kelmarna Community Farm in Ponsonby which has a 50 year standing in organic growing. Additional to leading volunteers and overseeing the vegetable production on four acres, Judy has been teaching an annual programme which includes a popular series - 'organic gardening basics', along with individual classes on food



forest design, seed saving, ways with weeds and growing your own herbal teas. Expect to see these workshops offered in the Bream Bay community.

Judy's greatest mission is to teach people the

importance of soil health and with that, how to make their own biologically complete compost. "Everything that grows needs to be supported by the soil biome and that needs to be at optimum function with all it's minerals in balance." She says; "It's no different to our own gut biome which must also be in good shape to support our wellbeing".

Judy has bought land locally and is in the early days of establishing her own farm project that will showcase the growing systems she teaches.

Give Judy a shout if she can help to create your edible paradise.

Judy Keats



PAPAROOA FARMERS MARKET

EVERY SATURDAY

THE VILLAGE GREEN 9-12

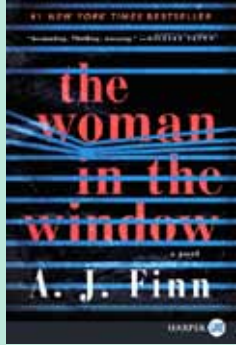
Market Manager
Alistair Gordon
027 52 54 782

BOOKS AND BOOKCLUBS

Agoraphobia is a fear of being in situations where escape might be difficult or that help wouldn't be available if things go wrong. It is not simply a fear of open spaces. Mild cases are quite common. I know I suffered from it myself after the death of my husband and many of my widowed friends can relate to that initial feeling of being unable to cope with an unknown



and unwanted future on our own. "The Woman in the Window," by A.J. Finn is based on one such case, a psychologist who is devoted to helping others but is unable to help herself. Doped up on meds and alcohol she thinks she witnesses a murder - but does she? This is a mystery that is solved in layers, like peeling an onion until you get to the heart of the matter. Astounding, thrilling, twisted...



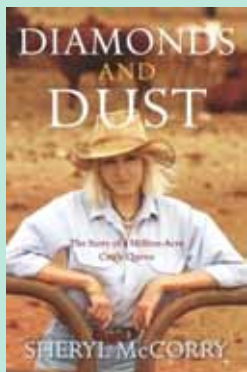
It takes a certain kind of courage to break the chains of agoraphobia and all three books this month are on the theme of courage.

"The late Victorian era really was the germination of the modern age, standing on the precipice of the 20th Century and the new World, I really wanted that curiosity

and excitement, the urge and desire for progress to be evident," stated author Tania Blanchard. "A Woman of Courage" is set in Victorian England when choices for women were extremely limited. You didn't own property, you didn't hold positions of power or governance, you stayed in your place, which was very small and dictated by men's ideas. Hannah Todd is a trained teacher with ambitions to stay single and devote herself to making a difference in the lives of women and children. Inspired by the suffragette movement in London, she starts a small group in the rural village where she lives and works with her parents who run a pub. There are villains aplenty with competing pub owners, bullying councillors, disinterested MPs, men with attitudes, and women with obstructing viewpoints. Life also offers many other difficulties to prevent her dreams becoming reality. Inspired by a true story it is one to humble us in gratitude to all such women whose courage and determination changed our world.



Another true life story, an autobiography which will inspire men as well as women and leave you gasping, is that of Sheryl McCorry, in "Diamonds and Dust". From childhood to grandmother she tells of life on Cattle farms in the Kimberley region of Australia. Farmers, how would you like to be responsible for 2.25 million acres of unfenced, hot, dry and dusty land running 38-40,000 head of cattle? You will love these tales of courage and grit, physical and mental endurance, failure and success, heartache and tragedy, set in the backdrop of mustering "cleanskin" cattle, first with stockmen and then helicopters. Sheryl is right in there working as hard as and alongside the men. Chapter one opens with the day when Sheryl was six years old. "I'll never forget the day when Gran burned her bum on the toilet set." Intrigued? Read on for lots more anecdotes of life in the Aussie outback. This woman will take your breath away.



working as hard as and alongside the men. Chapter one opens with the day when Sheryl was six years old. "I'll never forget the day when Gran burned her bum on the toilet set." Intrigued? Read on for lots more anecdotes of life in the Aussie outback. This woman will take your breath away.

working as hard as and alongside the men. Chapter one opens with the day when Sheryl was six years old. "I'll never forget the day when Gran burned her bum on the toilet set." Intrigued? Read on for lots more anecdotes of life in the Aussie outback. This woman will take your breath away.

Anne Bate

Cameron Philips CABINETMAKER Matakohe



- Kitchens
- Custom Furniture
- Furniture repairs & restoration
- Custom run mouldings
- Stairs & Timber Doors
- Residential & Commercial Joinery

QUALITY WORKMANSHIP

09 431 7579

cam@cp-cabinetry.co.nz

http://cp-cabinetry.co.nz

YOGA/PILATES

WEDNESDAY
10am

THURSDAY
5.45pm

\$111 for the term
or \$12 casual



AT THE SPORTS PAVILION



4 Hook Rd
Paparoa
Northland
phone
Sam Turner
022 317 1507

Paparoa Community Church

Connecting with God
Creating Community
Communicating the
Gospel



Church Service on Sunday at 10 30am
6pm for fellowship, prayer and sharing.
Everyone Welcome

REX BROWNE CONTRACTING

- Limestone & Metal Cartage
- Truck & Digger Hire
- Farm Roads
- Earthwork & Dams
- House Sites & driveways
- Wrapped Silage & Hay
- Cultivation
- Fencing & Mulching

Maize Silage planting & harvesting

☎ 09 431 7556
☎ 021 720 590

ADAM STEVENS
BUILDER

Licensed
Building Practitioner

For new builds,
alterations and roofing

021 741 363 A/H 09 431 6245

Rhoda Morrison

Consistent Award Winning Salesperson

20+ years in the industry

0274 800 691

09-431 6912

rhoda@fnkaipara.co.nz

www.roperandjones.co.nz

first national
REAL ESTATE | Roper & Jones

Dargaville Realty Ltd Licensed REAA 2008

KAIPARA PLUMBING LTD



**DRAINAGE
YOUR LOCAL
PLUMBING
SPECIALISTS**

**ALL
GENERAL
PLUMBING
AND
MAINTENANCE**



**Master
Plumbers**
Representing Excellence

PH GRAHAM
027 244 5430



**Maungaturoto and
Districts Rotary**

President: Babe Kapa



Over the past month a number of us have attended the Strategic planning meetings for the Country Club, to which, like many groups in our community, we are affiliated. As the Club has been in existence for some time we have been discussing what might be the best way forward for both the Club and the community. We are encouraging our members to attend the AGM on the 21st May. At this time we can hear the proposals for the way forward and also assess how we can support the Club in the coming years.

We had our first fundraiser of the year last month, the McSweeney band. Their music was great as usual and we certainly enjoyed Marian Burns playing of the fiddle. It is almost as though she can make it talk. On the dance floor there was a mix of traditional dancing- waltz, two-step etc as well as some sharing their line-dancing ability. We really appreciated the effort that the kitchen made to ensure everyone was fed, even though some hadn't booked in. If you haven't tried Jane's menu, you should visit on a Thursday or Friday night to enjoy one of her dishes, and her desserts are to die for. The kitchen is open from 6pm to 8pm and bookings are not necessary. We also appreciated having the bar open as that meant that while we had to get a licence, the serving of drinks was taken care of. After expenses were paid, we made a profit of \$1,550. We are thinking of having something similar later in the year, but this time we will have more of a country focus.

Once again we have been invited to join other schools from lower Northland for the Road Safety Education day in Wellsford for year 12 students. More of this next month, but this is an activity we have been involved in for a number of years. The information presented makes participants think not only of the implications when driving a car, but also the responsibilities people have as passengers.

Anzac day will see us laying wreaths at both the 6am service in Maungaturoto as well as the 10.30 service in Matakoho. While there are other services in our area I have traditionally gone to these two as their format is quite different and the timing works best for me.

As mentioned last month, we will be having to regular club meetings each month on the 2nd and 4th Tuesdays at the Centennial Hall at 6pm. These will continue to be catered for by DOE and Netball alternately. This gives these teams a chance to do some extra fundraising and they are effectively guaranteed at least \$200 a night. We have now decided to have an Executive meeting on the 1st Thursday of each month at the Country Club. This will give us a chance, after the meeting, to mix and mingle with others who come in for a meal.

If you would like to know any more about Rotary, please don't hesitate to get in touch with any Rotarian or give me a call on 021 142 0357.

Eileen

**The Paparooa Press is
also available online at
paparooa.org.nz**

GROW WHAKATIPU Paparoa Inc

We are pleased to say that we are back to harvesting on Sundays. We had been resting many of the garden beds as the summer crops came to an end and into early autumn but we are now back up and running and it is always good to see food going to the food banks again. Even though some of the beds were resting our volunteers were not! They have been busy clearing up the last of the summer harvest, weeding, aerating the soil and planting the cover crops which have now been grown to flowering stage and pulled up or left as mulch atop of the beds. As always we are thankful to Rowie for supplying us with seedlings for the next round of planting which has mostly now been completed. Plantings have included broccoli, cauliflower, Asian greens along with others. It is good to get them in while the soil is still warm to give them a good start.

A big thank you to all who managed along to our impromptu working bee in March to get the paths and beds finished up too.

We would like to share a few stories from our volunteers on why they come along and help out. Here is our first...

Katie:

I started volunteering at the Paparoa community gardens in 2021 not too long after we moved to the area. My main reason for volunteering was to meet more people in the community and to have volunteer experience for our home educated kids. I also had very little gardening experience and wanted to have a more successful veggie garden. In my first year there I joined the committee (took over writing Press articles) and went every Friday that I could. Through those interactions and experiences in the garden, and a couple of workshops, I learned a lot. Just meeting a variety of people with largely varying ideas on how to garden has helped me greatly and I have picked and chosen the information so generously given and this year I had an amazingly successful garden.

After a year, however, life started to get in the way of the volunteering, as it does when you are settling into a new place, and I had to stop helping in the gardens as much. I still try to go whenever I get a spare hour which in the last 12 months has equated to once or twice but I know it's always appreciated even when I turn up infrequently and not for long. I love the fact that I'm always welcomed and there's always a cuppa and a biscuit and a chat along with the work!

Katie Fullerton

PAPAROA ARTISAN & COLLECTIBLES MARKET

June 2nd 10am-2pm
Paparoa Memorial Hall

Artisanmarket.paparoa@gmail.com

BRYCE

THE LOCKSMITH LTD

Master
Locksmith

Bryce Frewin
Paparoa

Ph: 021 850 983



bryce@brycethelocksmith.co.nz

www.brycethelocksmith.co.nz

JORCO CONTRACTORS

AG & CIVIL SPECIALISTS

SERVICING KAIPARA AND NORTHLAND



Depots at:
580 Neems Road
MATAKOHE

634 Kara Road
MAUNGATAPERE

Call Trevor for a free
no obligation quote

☎ 021 259 0459

✉ trevor@jorco.co.nz

Facebook: @jorcocontractors

- Roading and Earthmoving
- Excavators, Trucks, Grader and Roller
- 30tn capacity Widening Transporter
- Bulk Fertiliser and Metal Cartage
- Fertiliser and Lime Spreading with GPS mapping
- 4x4 Truck and Tractor Spreaders
- Silage, Hay Baling and sales
- Cultivation 3-6m Power Harrows and Discs
- Mulching



Paparoa Community Library



Opening hours:

Monday & Wednesday 2pm - 4.30pm
Tuesday closed
Thursday 10am - 4pm
Friday 11am - 1.30pm
Saturday 10am - 12midday

NEW
HOURS

Out of hours books can be returned to the returns box inside the door to the right at Skelton's Drapery

Paparoa Library Manager
09 431 7555 (During library hours)

KMU SURVEYS LTD

MAUNGATUROTO

Ken Urquhart

Licensed
Cadastral
Surveyor



09 431 8705
021 161 2344

kenurquhart@xtra.co.nz

From our family to yours

Unrecognisable

Small town styles of recognising locals about the place is, and I'm sure I'm not the only one, done by vehicle and registration. Certain vehicles are to be avoided, or given a wide berth- I won't describe the vehicles 'cause you'll know who- but when a family gets a new car, low and behold, for a length of time you are unrecognisable. We recently changed cars. And I'm wondering why friends aren't waving to me anymore... because they don't know who I am. It's the 'Clark Kent to Superman' disguise- its obvious I'm still me but I am completely in disguise.

This new car comes with bells and whistles not seen on my old car, stuff that's probably been pretty standard for a long time, but I've never had a vehicle new enough to enjoy. Such as a push button start. A giant infotainment screen so distracting you wonder how its legal. Sensors, for everything. It seems no matter how I'm driving, something is beeping at me. Warning about pedestrians, or driving over lines, or sensing rain? One of those,

possibly all of them, its a noisy time driving these days. Quite alarming.

The novelty has worn off for the kids. There's no eating in the new car. No drinking. No feet touching anything, not even the floor. No fingers touching the windows. No toes touching the windscreen. And yet, each time I get in it, crumbs, sticky hand prints and scuff marks have manifested. Such is life with children!

So if you see someone waving at you, from an unrecognisable vehicle this May, its probably me - as I press wildly on the giant screen, trying to find a setting to turn off all the alarms. It's not so much a wave as it is a warning that my sensors are about to explode and throw pastry all over the carpet!

Have a wonderful May!

Jenny



ASSET

CHARTERED ACCOUNTANTS

Asset Chartered Accountants Limited

Tessa Laurence

tessa@assetca.co.nz

0220957665

Unit 2, 1994 Paparooa Valley Road, Paparooa

gas.
Petrol Service Stations

Paparooa

Open 7 days

Mon-Sun 6am-10pm

gasolinepaparooa@gmail.com

- Petrol, diesel & oil
- Fresha Valley milk
- Pies
- Barista coffee
- Great variety of snacks
- Pet food - cats/dogs
- Cop-Rice biscuits 20kg
- Great variety of bait and all fishing requirements
- Top ups & prepay
- Frozen foods
- Firewood
- Hardware
- TRAILER HIRE



Phone
09 431 6302

Who's who at the market

Over the last 18 years Paparooa Farmers' Market has become such an institution that some might be forgiven for taking it for granted. For some it is a 'must go' on Saturdays while others just don't know what they have missed.

But spare a thought for those who make it happen. The market does not just magically pop up every Saturday.

At the moment Alistair Gordon is the go-to person for stall holder bookings, market layout and finance. He is ably assisted by his partner Gill. Pete Hames and Graham Taylor are looking after the Traffic Management side of things on a roster basis. Also, as part of the team Shoh and Glen take turnabout with set up. In reality everyone pitches in to make the set up and breakdown as easy as possible. And on many occasions stall holders lend a hand too.

This all helps to make the market a cooperative effort which fits the market philosophy of a community affair. A couple of the helpers receive a small payment for

their services, otherwise all those involved are volunteers.

Looking forward, the organisers are actively seeking further assistance. As the saying goes, many hands make light work. It would be great to have a few more people to call on to avoid a weekly commitment. The Traffic Management role requires some training which the market would pay for. Some of the above people have been regulars for all of the 18 years.

If you can spare a few hours on Saturday mornings, please give Alistair a call. 027 525 4782

The market are always looking for additional stallholders, especially in the produce and food categories.



May in the Garden

Dahlias

It's been a beautiful season for Dahlias! Now is the time to prune back long stems if your plants are beginning to look straggly. Existing plants can be divided any time over winter or they can be lifted and stored - this protects the tubers. Once dug, dry the tubers, remove excess soil, and store in a cool dry place.

Spring bulbs

There is still time to get your spring bulbs into the ground. Bulbs Direct has an amazing range to choose from and are based right here in Paparoa (bulbsdirect.co.nz).

Sweet peas

These perfumed gems are hardy enough to be planted out in autumn and winter and seed can be sewn directly into the ground. Slugs and snails are their main issue so bait well.

Garlic & shallots

These both need a cold snap to kick-start bulb formation. Bury garlic cloves 3-5cm deep and mark the rows so you don't forget where you put them.

Shallots are slightly different - bury them with their noses just peeking out of the soil.

Seedlings to sow this month

Broadbeans, broccoli, cabbages, carrots, cauliflower, chinese cabbages, kale, onions, peas, radishes, silverbeet, spinach, and winter lettuces.

Happy gardening!

Smiles, C

Paparoa Racquet Sports Update

Tennis has finished for the Summer season, after two terms of successful kids coaching by Peter Sheppard. One of our members, Lissie Cleave, went to Australia to play in a Blind and Low Vision tennis tournament. The courts are still open to play independently. Non members can put \$2 in the honesty box by the entrance gate.

Badminton continues every Thursday at the Paparoa Hall at 7pm. Racquets are available, and everyone is welcome, including high school aged players.

Table Tennis has kids/teens coaching restarting this term at the Paparoa Sports Pavilion on Tuesdays 5.30- 6.30pm. Coaching is free and ball and bats are provided for use.

Adults start at 7pm, and we welcome any new players.

Get out there and have some fun and take advantage of what is available in our little village.

Pete

021 0567163



Keith the TV Guy

Freeview digital TV



21 TV and 9 Radio/Music channels are currently being transmitted.

Satellite dishes, decoders, cable etc., supplied and installed.

phone Keith
021 239 4251

BETTER CONTAINERS

Rent Spacious & Secure Containers Today!

Need extra space? Our 10 & 20 ft storage containers in Maungaturoto are the perfect solution!


- One use containers
- Safe, weather resistant
- Easy one handle door opening
- Extra ventilation
- Store your belongings with peace of mind
- Lockbox padlock
- Ideal for personal or business use


PHONE GARY 021 902 087



TR ENGINEERING SERVICES

turning/milling/welding/fabrication

 021 0664 338

 trengineer232@gmail.com

YOUR TYRE SPECIALIST

Providing **60** years of service
in the heart of Kaipara.

- Tyres
- Brakes
- Wheel Balancing
- WOF
- Suspension
- Servicing
- Alignment
- Batteries

Garnetts Tyre Service

 2 Gorge Rd, Maungaturoto

 09 431 8255

BRIDGESTONE 

Paparooa Print Shop

**At Skelton's
Paparooa Drapery
431 7306**



**paparooaprint@gmail.com
all your printing needs**



A local scaffolding service for any renovation, painting, new build, roofing & access requirements.
Call anytime for an estimate.
**0204 186 8964
09 280 9520**

**www.wjbarker-scaffolding.co.nz
info@wjbarker-scaffolding.co.nz**

Pets in the Valley



Horses and hounds in the Valley.

A special milestone for the area was celebrated recently when Kaipara Hunt celebrated its 50th Jubilee. Around 50 riders met at Karen and Mike Smales place, which borders onto the Paparooa Golf Club, to ride out with the hounds and share some fond memories.

There were visitors from as far afield as Gisborne and Dannevirke as well as those from closer hunts of Northland and Waitemata who came to celebrate the day and enjoy the camaraderie and joy of riding horses to hounds. There were also many who no longer ride on the hills but came to share some memories and catch up with old friends.

One of the great things about hunting on horseback is that it caters for riders of all ages and varying abilities, we had riders ranging from 12 to over 80, with some capable of jumping all the spars and fences and some happy to just ride through the gates. Jenny Steven shared some history of how the hunt originated in the 70's at Taporā. It was initially called the Northern Counties Hunt and her husband, Russell, was the first huntsman. Skip forward to 2024 where 12 huntsmen later we are still enjoying this traditional sport. Thanks to everyone over the years who have supported and participated in the Kaipara Hunt.

Janine



**Roger Price 09 431 4590
Mechanical Services
Lifestyle Autos
Mobile Mechanic**



www.battensbybrothers.co.nz   

Call to book us now for ...

- ◆ **Ground Cultivation**
- ◆ **Silage and Hay**
- ◆ **Fertiliser spreading**
- ◆ **Firewood (WINZ approved)**



Contact Glenn on 021 983 734

Email: battensbybrothers@xtra.co.nz

Rail repair update

Work repairing the North Auckland Line is going well, and is scheduled to reopen to freight trains in July.

There were more than 200 damage sites along the line between Swanson and Whangārei. These included overslips, slumps, washouts and underslips, following last year's late January weather event and Cyclone Gabrielle. Repairs have now been completed on about 80 per cent of the minor to moderate damage sites. Work is also completed on about a quarter of the 36 major damage sites, with work on the rest well underway. The vast majority of the repair work should be completed in the next few



months, and then the focus will be on re-commissioning the track. Some tidy up work will continue around the tracks into July.

Given the line has been closed for so long there will be safety checks along 180km of rail line before it can open to heavy freight trains.

Science Corner



A Matriarchal population in the Paparoa Bush

Acanthoxyla prasine - or the prickly stick insect. (Maori names include ro, whe and wairaka.)

All the Acanthoxyla genus are females and reproduce by parthenogenesis, or reproduction without fertilisation.

We met this gorgeous bright green lady sitting on the boardwalk. She was a bit slow - maybe because it was a cool morning. We gently put her onto a manuka shrub.

Some facts about her:

NZ has over 20 described different species of stick insect. The largest stick insect Argosarchus horridus has females up to 20 centimetres long.

The genus Acanthoxyla eats a range of native plants but also seem to like macrocarpa and cedar trees.

They are endemic to NZ and live in the bush and gardens. They have also been found in cedar trees in Southern



Britain where it is thought they hitch-hiked in eggs in the soil of NZ plants that were exported there.

They feed on plant leaves at night. They are very good at staying motionless and remaining camouflaged during the day. They are about 8cm long.

Birds and possums like to eat them.

They live for about 2 years and produce eggs in autumn - randomly

dropping them on the ground as they wander along. These eggs hatch in spring.

I hope we have lots in our bush - but don't go looking for them - according to Maori folk law - if one drops on you and you are female, you are pregnant!

Stella

The result of plastic pollution

Plastic is one of the most enduring materials man has created. Nowadays, we all know that it can take hundreds of years for plastic to degrade, and research is showing that it is possible that it does not even fully degrade, but becomes what we call microplastic.

Early last month, an albatross (toroa) returned to its nest to feed its 10 day old chick. Unfortunately the mother had ingested plastic while foraging at sea, which it then regurgitated to feed its chick. This plastic blocked the chick's digestive system, killing it. Another young albatross recently died in Napier after swallowing a whole plastic bottle.



Bottles are one of the worst culprits in plastic pollution and drink companies are selling about one billion single-use plastic bottles in NZ every year - and that's just the tip of the plastic iceberg.

Plastic waste makes up 80% of all marine pollution and around 8 to 10 million metric tons of plastic end up in the ocean each year.

Research states that, by 2050, plastic will likely outweigh all fish in the sea.

PP

Al's Upholstery

Alan Hilton



**Automotive
Furniture
Covers
Seats**

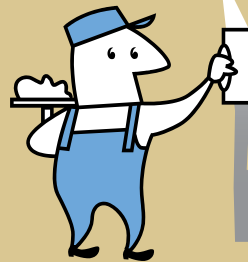
over 30yrs experience

021 0709101

144 Franklin Rd, Paparoa

TINOPAI PLASTERERS

WE GUARANTEE THE HIGHEST QUALITY FINISH



35 Years experience in...

- *GIB Stopping*
- *Fibrous Plastering*

for FREE quote, call us now!
Trevor 021 0300 073



Business and Home Computer Support

Business Support including:

- Proactive maintenance and support
- Hardware supply & maintenance
- WIFI design, setup and fine tuning
- Printer supply, setup and support
- Backup and Disaster Recovery planning
- Web Hosting
- Office 365 / Azure setup and migration
- Antivirus/firewall TDR EDR

Home Support including:

- Computer upgrades and repair
- New computer supply and data migration
- Setup cloud and local backup
- Smart TV setup
- WIFI design and configuration
- Printer Supply and setup
- Antivirus and security advice
- Friendly, straight forward approach.

Kaipara IT - Making it Easy

Contact Wayne

email support@Kaiparait.co.nz

Ph 0800 2network (0800 263896)

or 0226485713 www.kaiparait.co.nz

REMEMBER!
Either way
it's 20k

20

when you pass a
school bus that's
picking up or
dropping off children.

Local JPs

Robyn Skelton, Paparooa
4317306 or 0272922787
Business hours only

Val Faulkner, Paparooa
021687226
Evenings and weekends

Graham Withers, Tinopai
2809552 or 02102545799

Derek Birt, Māreretu
4316847

WHAT'S ON - MAY 2024

The Kauri Museum - open 7 days, 9am-5pm

White Rock Gallery - 5 Church Rd Matakoho (Kauri Museum) Open 7 days 10 - 4

Kaipara Wellbeing Hub - Sat May 11. Public event. See ad p2 for info.

Natural Perfumery Workshops - Mon May 13 & May 20. Limited spaces.
See p6 for booking info.

One Act Play Festival - Fri May 17, 7pm & Sat 18, 2pm & 7pm. Otamatea
Repertory Theatre. See p7 for booking info.

OUT & ABOUT AROUND TOWN

Paparooa's Farmers Market Happens every Saturday morning, 9am- 12 at the Village Green. Fresh fruit & veges, sweet treats, plants, fish, eggs, assorted crafts, live music and so much more. A great place to catch up with friends or make new ones.

Artisan & Collectibles Market Quarterly. Paparooa Memorial Hall 10am-2pm. Next market June. Email artisanmarket.paparooa@gmail.com or ph Steph 027 452 7124 or Ruth 021 433 969.

Grow Whakatipu Paparooa Drop in for a chat, hands on experience, or a cuppa. Every Thursday & Friday 10am-1pm. Next to the showgrounds.

Paparooa Golf Course Winter Sunday golfing. 18 holes (\$20) tee off 10am, 9 holes (\$10) 12 midday. Includes food afterwards. Enquiries to club secretary on 022 678 1474.

Paparooa Beats 88.3fm Community radio based right here in Paparooa. A "Beautiful Resistance" to the mainstream. Also available online at paparooabeats.radio12345.com. If you would like to get involved and play you own tunes you can contact them on paparooabeats@gmail.com.

Unichem
Orrs Pharmacy Maungaturoto



Don't forget -
if you are unable to collect
your prescriptions from the
Pharmacy we can deliver daily to
Paparooa, Matakoho and Tinopai
confidentiality assured

**For all your health and
beauty needs at competitive
city prices and with
friendly country service**

**Enjoy the benefits of shopping locally
and save petrol - we are worth the visit!**



144 Hurndall Street, Maungaturoto
Phone (09) 431 8045
Fax (09) 431 8808

SHOPPING THAT'S TWICE
AS REWARDING.

maungaturoto@orrs.co.nz
Open Monday to Friday 9am - 5pm

KAIPARA LANDSCAPE

2 Blakey Road
Maungaturoto



**Landscape and Garden supplies,
garden ornaments, firewood,
digger hire, pots**
0800 769 843

On behalf of St Mary's Catholic Church Maungaturoto:

**Bishop Steven Lowe will officiate a Mass
at St Mary's Catholic Church, Griffin Road
Maungaturoto, on Saturday 4th May 2024
at 4pm.**

**All welcome. Light refreshments will be
served after Mass.**

Next Community Dinner

Mid Winter Christmas dinner will be the theme of the next community dinner on Saturday 22nd June at the Sports Pavilion in Paparooa.

This is a great chance to get out and share a yummy home cooked meal in Paparooa and catch up with old friends and make some new ones.

The Paparooa Sports and Recreation Association enjoy putting on the dinner and we encourage people who are new to the area to come along too and meet some other great community members.

Book now with Jane Bailey 09 4316 148 or lillian.jane.bailey@gmail.com



REGULAR EVENTS, MEETINGS AND ORGANISATIONS

- Anglican Church St Marks** Hook Road, ph 431 8193 or 431 6224 for services info
- Ararua Church** 10.30am every Sunday. All welcome Ph 431 6622
- Art Studio, Ruawai** Wed 10-12noon ph Frances 439 2554
- Badminton** Thursdays 7pm Paparoa Hall \$2 students, \$3 adults, Pete 021 056 7163
- Farmers' Market** Every Saturday 9-Noon, Village Green, Linda 021 362468
- Grey Power** Last Wed in month, 1pm, Anglican Church Hall, Maungaturoto
- Grow Paparoa** Thur/Fri/Sun 10am to 2pm at the Community Gardens
- Holy Trinity Anglican Church**, Maungaturoto, All welcome. Ph 431 8193 for services information.
- Kaipara Marching Team** Weds 4-5.30pm, M'gto, Ph Lyn Hutchings 022 070 8674
- Line Dancing** Thurs 10am-noon Paparoa Hall Ph Jackie Cornes 027 368 7298
- Paparoa Mah Jong Group** 1st & 3rd Tues, Paparoa Hall 1.30-4pm, Sara 021 0774947
- Mainly Music** Wed 9.30am Paparoa Comm Church, Lynaire Porteous 431 7520
- Matakohe Garden Circle** 1st Weds each month, 1pm, J Mackinnon 431 6689.
- Maungaturoto Opportunity Shop** Open Mon, Wed, Thurs, Fri 10am-3pm. Alternate Sat mornings 10am-1pm.
- Maungaturoto and Districts Rotary Club** Maungaturoto Centennial Hall, Tuesday evenings 6pm, Ph Stella 021 149 0877
- Otamatea Quilters** 1st and 3rd Mon month 10am, Paparoa Hall 09 439 2262
- Outdoor Bowls** Maungaturoto Green Ph Tony 431 6026 or Brian 431 6884
- Pahi Hall** available for hire Ph Tina 0210335128
- Paparoa Community Church** Sundays 10.30am, 4 Hook Road, 431 6795 or Dave Porteous 0274 180 676
- Paparoa Box Fit** Every Wednesday 6-7pm, Stretching/Cardio/Boxing \$10, Paparoa Hall, Stacey Watson 09 283 9931
- Paparoa Dance to Music** Every Tuesday 10:30-11:30, Stretching/Balance/Resistance/Bands/Zumba, \$5, Paparoa Hall, Stacey Watson 09 283 9931
- Paparoa Garden Circle** 2nd Wed of month. Contact Raylee Over 021 2565 893
- Paparoa Hall** Functions venue Ph Robyn 431 7306 or a/h Loraine 431 7290
- Paparoa Library** Mon, Wed 2-4.30, Thurs 10-4, Fri 11-1.30, Sat 10-12. Library Manager 09 431 7555 during library hours. Returns Box at Skeltons
- Paparoa Lions** Dinner Meetings 3rd Mon in month 6.30pm, Sports Pavilion
- Paparoa Playcentre** Tuesday and Thursday 10am-1pm Visitors Welcome Ph Kirstin 431 7373 txt 021 525 425 or Jane 431 6148 paparoa@playcentre.org.nz
- Paparoa Primary School** 2023 Term 1 2024 starts 31st Jan Ph 431 7379
- Paparoa Toy Library** Wed 10.30-1pm, Paparoa Comm Church, Hilery 431 7330
- Paparoa Volunteer Rural Fire Force (VRFF)** 1st and 3rd Monday of the month 6.30pm Depot Rd ph Ken Ogilvie 021 129 4042
- Plunket Ready Steady Wriggle** Mon 10am Sports Pav. Tina Ball 021 033 5128
- Selwyn Centre** Thurs 9.45am for over 65's, St Marks, Hook Rd, Ph Sue 431 6224
- Sports Pavilion** Functions Venue Bookings ph Jane Bailey 431 6148
- St Mary's Catholic Church** Maungaturoto 10am Wed, 4pm Saturday
- Table Tennis** Tues 7.30pm, Sports Pavilion \$2 Pete 021 056 7163
- Tennis** Tues Junior from 4pm, Adult 5.30pm, Ph Sue 431-6224, Pete 0210567163
- Yoga For Everyone** Tuesday and Friday mornings 9.30am Paparoa Sports Pavilion. Ph 027 294 4855
- Yoga/Pilates** Wed 10am, Thurs 5.45pm. \$111 for the term, \$12 casual. Paparoa Sports Pavillion

PLEASE UPDATE US WITH YOUR DETAILS: press@paparoa.org.nz PP

Paparoa Press PP **CLASSIFIED ADVERTISING**

Storage Available
In Paparoa: Secure 20 foot Containers - contact Gary Dallas 021 431 712 Paparoa County Depot Trust



Your Ad Here!
Paparoa Press classified ads are a great way to buy, sell, or promote services.
This ad for \$5 + \$5 for a photo.



Buy Local
Support Local
Help your community thrive and businesses survive

LOCAL TIDES for MAY 2024

TIDES - CALCULATED for PAHI-WHAKAPIRAU

DATE	LOW	HIGH	DATE	LOW	HIGH
1st	10.13	16.40	17th	12.26	6.25
2nd	11.24	17.53	18th	13.20	7.21
3rd	12.33	6.27	19th	14.08	8.10
4th	13.35	7.33	20th	14.51	8.53
5th	14.31	8.30	21st	15.31	9.32
6th	15.23	9.22	22nd	16.09	10.10
7th	16.31	10.10	23rd	16.46	10.47
8th	16.57	10.57	24th	17.24	11.25
9th	17.43	11.44	25th	18.04	12.06
10th	6.07	12.30	26th	6.27	12.49
11th	6.53	13.16	27th	7.13	13.37
12th	7.41	14.04	28th	8.04	14.29
13th	8.31	14.54	29th	9.00	15.26
14th	9.26	15.49	30th	10.00	16.28
15th	11.26	16.48			
16th	11.00	17.50			

Community Directory

EMERGENCY: FIRE ■ POLICE ■ AMBULANCE dial 111

COAST TO COAST HEALTH CARE

Maungaturoto Medical Centre: 8am-5pm Mon-Fri 09 431 8576
Paparoa Clinic: Open Tues and Thurs 8am-5pm..... 09 431 7222
For urgent after hours medical service (Wellsford)..... 09 423 8086

DISTRICT NURSE Dargaville Hospital 09 439 3330
Healthline - 24 hour service..... 0800 611 116

HOSPICE KAIPARA Dargaville Hospital 09 439 3330

KAIPARA DISTRICT COUNCIL Helpline 0800 727 059
Mangawhai Office..... 0800 100 388

KAIPARA PHYSIOTHERAPY Lyndsay Bargh/Lynne Rhodes...09 4391656

LINKING HANDS Health Shuttle Service, Maungaturoto.09 431 8969

LIONS CLUB PAPAROA President Jim Rowlands..... 09 431 7290

MAUNGATUROTO PHARMACY 09 431 8045

MAUNGATUROTO REST HOME 09 431 8696

OTAMATEA COMMUNITY SERVICES Community House 09 431 9080

PAPAROA LIBRARY Free Membership. Ph 09 431 7555 (Bus hours)
Mon, Wed 2-4.30, Tues closed, Thurs 10-4 Fri 11-1.30, Sat 10-12

PAPAROA PLAYCENTRE paparoa@playcentre.org.nz

PAPAROA PLUNKET .Plunket Nurse Louise 027 2823987 or 09 438 2508

PLUNKET Helpline 0800 933 922

PAPAROA PRIMARY SCHOOL 09 431 7379

PROGRESSIVE PAPAROA INC (PPI)Pete Hames 021 0567163

PARENT PORT Inc. free help for families Linda 09 425 9357

Time to sort out your mailbox?

There are requirements that you must meet in order for your hardworking postie to deliver your mail. It's amazing how many people just don't think it through, or ask their postie, before they go to the trouble of installing their mailbox. Find out which direction they will be coming from then drive your vehicle up to find a good spot. If there's already other boxes set up, as in a shared drive situation, don't put your one somewhere random.

There are so many mailboxes that are low to the ground (or even on the ground), or are low and have doors that hinge from the top, and the postie needs extra long arms to open them... Or have no door at all.



There are also boxes that have been driven over, propped back up but not repaired, and there's nowhere in the broken mess to actually put a letter, let alone a parcel. There's boxes that have slowly fallen to bits over the years and have doors that just fall off when they're opened and have to be wedged back in again.



This has finally been rectified

Then there's the boxes that meet all the requirements but were designed by someone who's never had to try to deliver or retrieve mail from them.

These are the ones with the spring loaded door with no way to keep them open. The postie has to use one hand to hold the door and reach across with the other (extra long) arm to place mail, newspapers, and parcels in the box.

The mailbox in the diagram is one of the most user friendly, but a common mistake is to not have enough clearance underneath for the door to

open properly. This means parcels that would easily fit in the box can't fit through the gap. An easy fix.

And if you have your mailbox on the gatepost please don't shut the gate... or if you want to keep your gate shut, move the box so it's accessible.

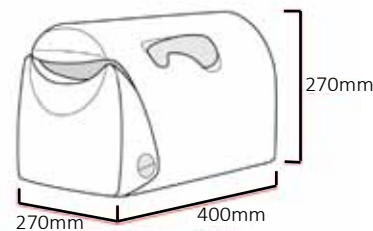
Every time the postie has to undo their seatbelt and get out of their vehicle adds time to their day. It may not seem like much but it adds up when they're doing it 50+ times a day. It's a huge annoyance - especially when it's raining.

Your postie does not have to deliver your mail if your mailbox doesn't comply. They also don't have to deliver your mail if you aren't registered on the rural mail run. So if you have a non-compliant mailbox, or aren't registered, and your postie still delivers to you, thank them by sorting it out - and put your street number on it!

The following is from the NZ Post website:

Your rural mail will be delivered if your mailbox:

- Has a minimum size of 400mm deep x 270mm wide x 270mm high, with a flag fitted to indicate mail is awaiting collection.
- Provides access by a front-opening hinged door that opens downwards and is non-locking. It should have a mail slot large enough for large magazines to be placed inside without bending or opening the door. The mail slot should be no less than 250mm x 30mm. Mail should drop out of sight to keep it secure.
- Is located to allow easy, all-weather access and positioned so your Rural Delivery owner-driver can reach it without leaving their vehicle. The best location may not always be by your gate. It's important you comply with local bylaws, traffic regulations and phone/power cable requirements. Please discuss your options with your Rural Delivery owner-driver before constructing your mailbox.
- Has the street/road number of your property (if available) clearly printed on the box



in numerals at least 25mm high. Local Authorities are progressively allocating numbers to all properties in their area and your property may already have a number allocated. If not, or if you would prefer to use your name, please feature your initials and surname, or company name.



Height and position of mail slot

- The recommended height of your mailbox mail slot is between 1m and 1.2m from the ground. This allows easy and safe access without the Rural Delivery owner-driver having to get out of their vehicle.
- You can buy a compliant purpose-built rural mailbox from selected retail and hardware outlets.



This box has been moved... to a spot no easier to get to...

BUY - SELL - RENT

RESIDENTIAL - RURAL - COMMERCIAL

Let one of our trusted award winning team members look after you. For everything real estate - we Cover the Kaipara



Craig
021 461 668
Sales



Adrianne
0204 076 2650
Sales



Michael
027 278 8122
Sales



Kathy
027 436 4750
Sales



Gary
021 902 087
Sales



Rhoda
0274 800 691
Sales



Karyn
029 779 9019
Sales



Nicole
0211 251 576
Sales



Jill
021 505 712
Principal Officer
Sales



Inez
Property
Manager



Simone
Property
Manager



Corey
Senior
Property
Manager



firstnational
REAL ESTATE

Licensed under REAA 2008

Roper & Jones
Dargaville Realty Limited

roperandjones.co.nz

09 431 1016
143 Humeall Street
Maungaturoto 0520

09 439 7295
110 Victoria Street
Dargaville 0310